

SECTION 3, T.7N., R.3E., S.L.B. & M.

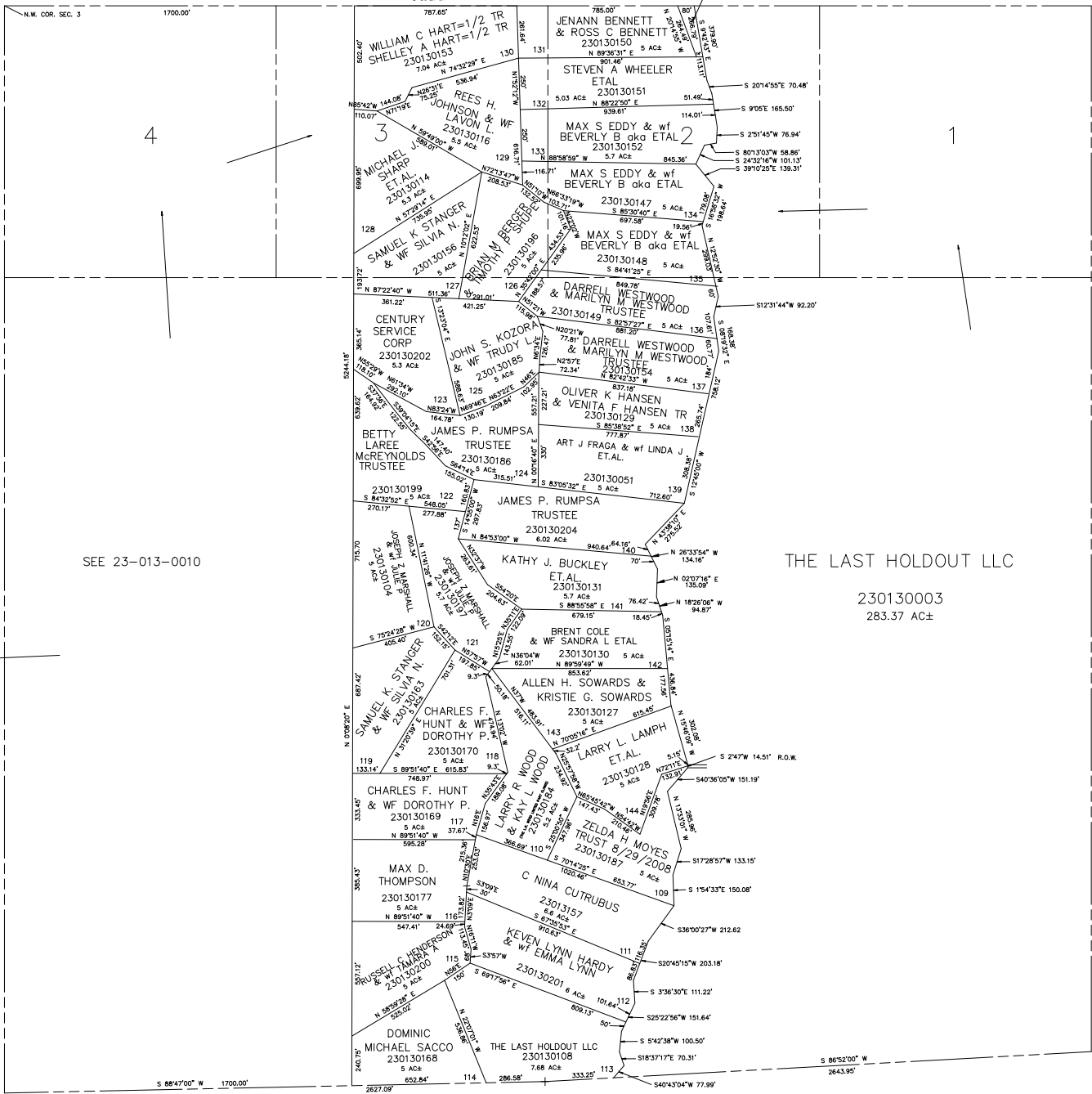
IN WEBER COUNTY

SCALE 1" = 400'

TAXING UNIT: 58

SEE PAGE 46-1

JENANN BENNETT  
& ROSS C BENNETT  
230130235



SEE PAGE 13

SEE PAGE 13

SEE 23-013-0010

THE LAST HOLDOUT LLC  
230130003  
283.37 AC±

SEE PAGE 13-3